

Buster Simpson

www.bustersimpson.net

901 Yakima Avenue S., Seattle, WA 98144 206.328.6212 tel & fax buster@bustersimpson.net

Boise Water Table

The Boise Water Table suggests the act of civility involved with a shared resource of water and people who participate. The sculpture refers to both a hydraulic expression of water that sustains as well as an amenity; a round conference or kitchen table of civic or domestic proportions that sustains the social. Molecular water spheres ascend up through the table, transforming into open vessels.

The design accommodates the existing fountain infrastructure and proposes to add additional fountain infrastructure. A compressed air system will be added to create a misting of potable water for summer cooling. The existing water jets will be 'tuned' and new jets will be added to create dramatic laminar columns of water. These laminar projections of water will appear to exchange or converse as they project into and out of the various bowls atop the water table, suggesting the sharing of resources as well as the act of social conversation at the table.

Dramatic LED lighting will emit from within the bowls illuminating the mists, fountains or laminar projections with a variety of color effects. Pool lights are also installed under the table to illuminate the bubbles and back light water cascading off the table's edge. A real time tuning of the fountain and lighting to respond to environmental conditions and social and civic functions will be included. Water displays are monitored and programmed in response to environmental conditions, social and civic needs. Winter ice formations are a possibility with this fountain sculpture. Seating surrounds the table providing inward and outward seating and allowing for engagement of feet and water. Because of the proximity of the geothermal water supply in the basement, I feel that a heated bench would be an asset. The fountain will be tuned to provide sounds capable of masking the traffic.

The surface of the bowls atop the table provides an opportunity for text or symbols/images to be either pierced at the edge or applied within the bowls. This will potentially be a collaborative process to assure a timeless concept and avoid the cliché, involving local writers submitting poetry and/or the collection of images from sources such as First Nations' pictographs, historic and scientific icons, or other regional references. The text and images will serve to contextualize the story of the water table's vessels within this place. A conversation and selection process to determine appropriate text and icons will start with the notion of civility; a sculptural civic discourse at city hall reinforcing the mission to represent and serve its citizens.

The bowls will be spun stainless steel spheres welded to the plate stainless steel table. All surfaces will be glass bead blasted for a satin finish. The table lip will

Buster Simpson

www.bustersimpson.net

901 Yakima Avenue S., Seattle, WA 98144 206.328.6212 tel & fax buster@bustersimpson.net

provide structure and create a drip edge to assist water choreographed to flow out of the bowl and over the table edge. The lip will also provide a location for white LED lighting to backlight the falling water as well as illuminating the spheres below the table. The bench will provide a protective barrier between the plaza and the recessed fountain drainage. There is a possibility of controlling the water elevation within the drainage basin to create a pond effect.

BOISE WATER TABLE

Boise City Hall | Boise, Idaho

BUSTER SIMPSON



The Boise Water Table suggests the act of civility involved with a shared resource of water and people who participate. The sculpture refers to both a hydraulic expression of water that sustains as well as an amenity; a round conference or kitchen table of civic or domestic proportions that sustains the social. Molecular water spheres ascend up through the table, transforming into open vessels.

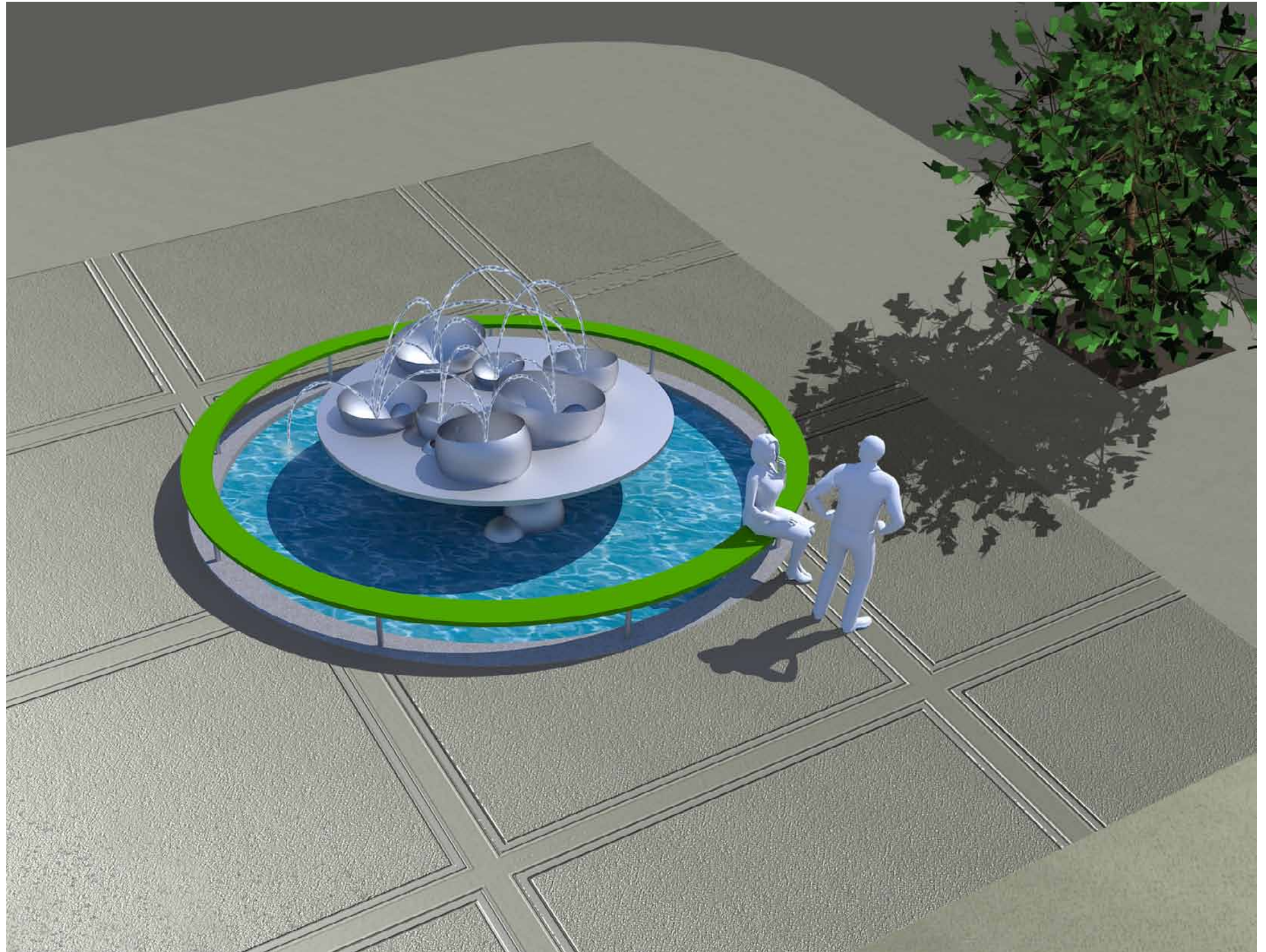
The design accommodates the existing fountain infrastructure and proposes to add additional fountain infrastructure. A compressed air system will be added to create a misting of potable water for summer cooling. The existing water jets will be 'tuned' and new jets will be added to create dramatic laminar columns of water. These laminar projections of water will appear to exchange or converse as they project into and out of the various bowls atop the water table, suggesting the sharing of resources as well as the act of social conversation at the table.

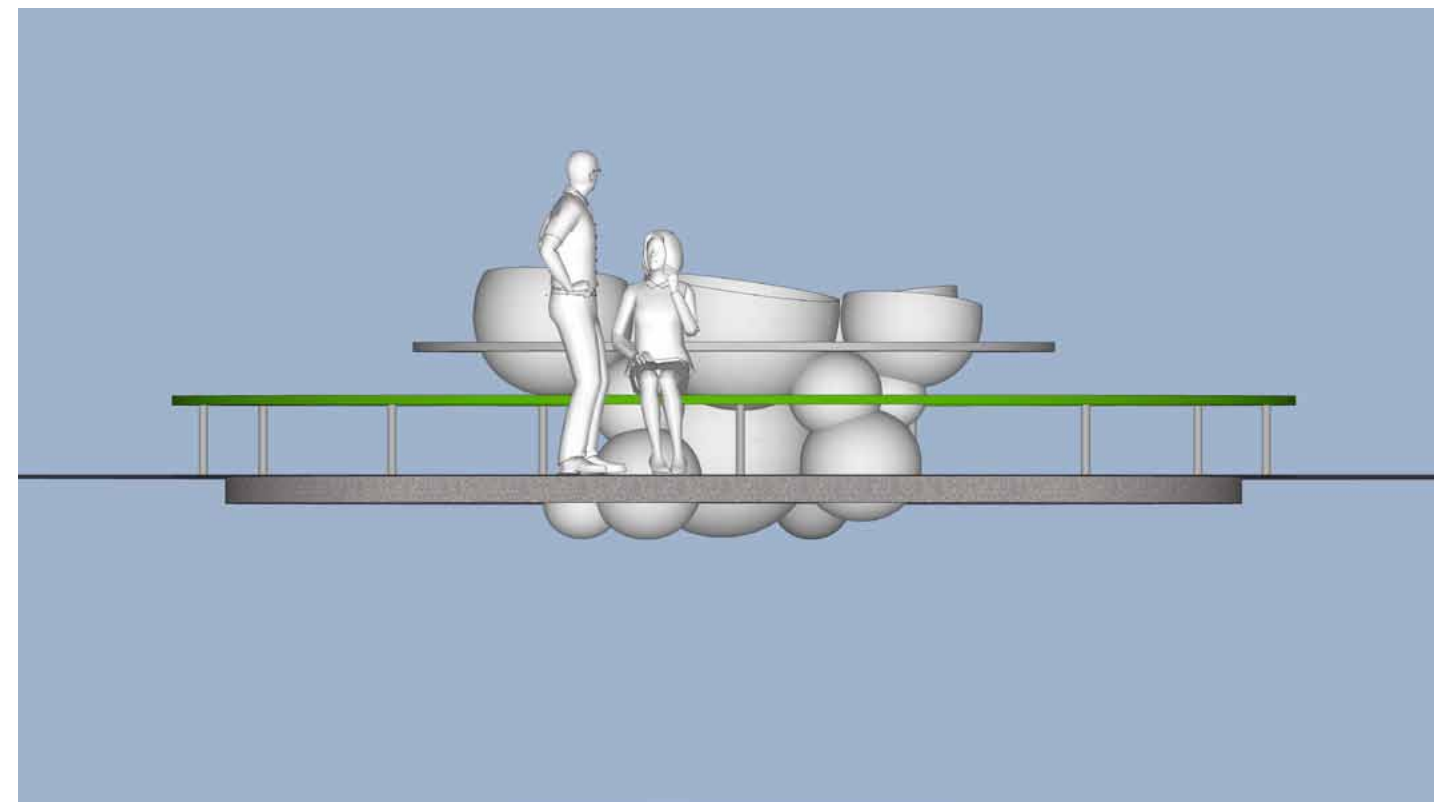
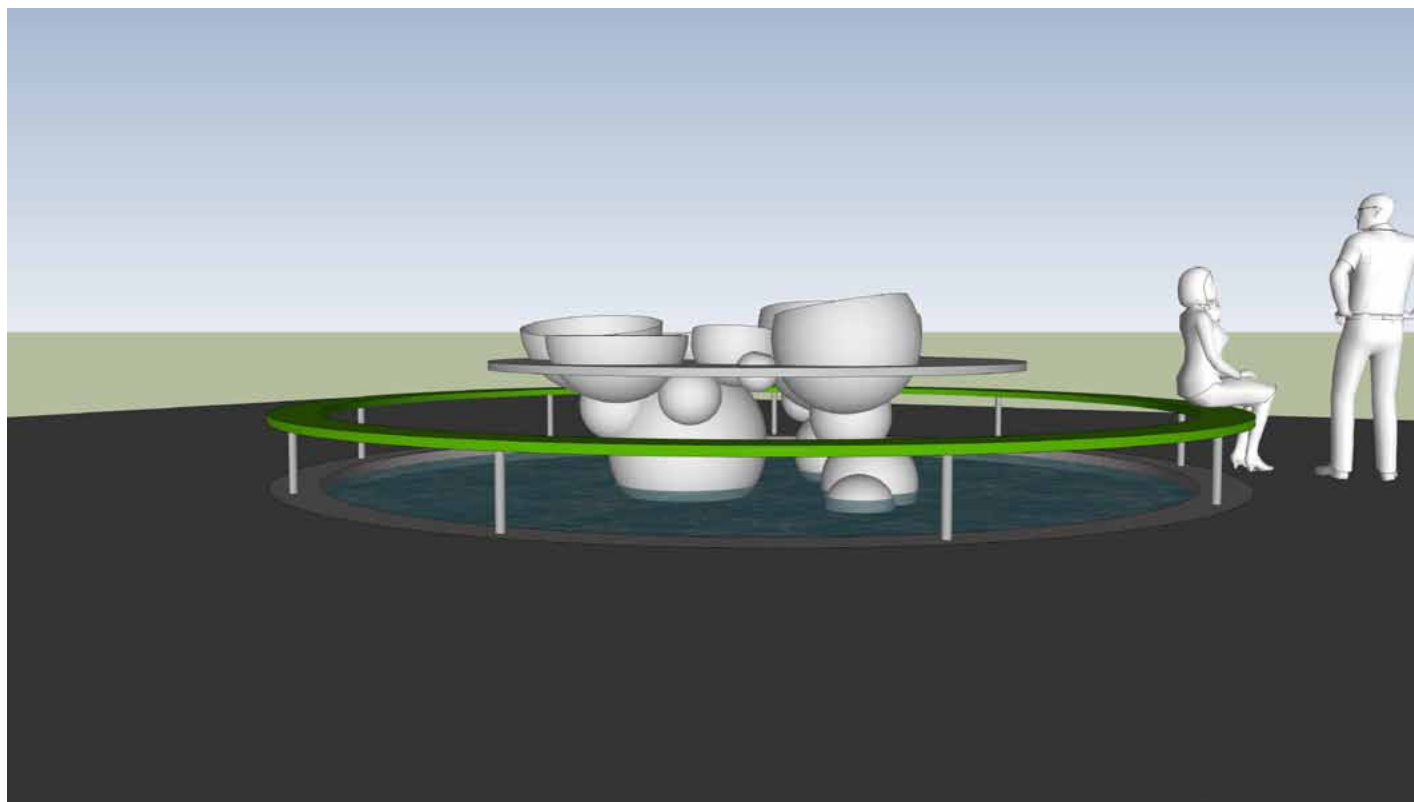
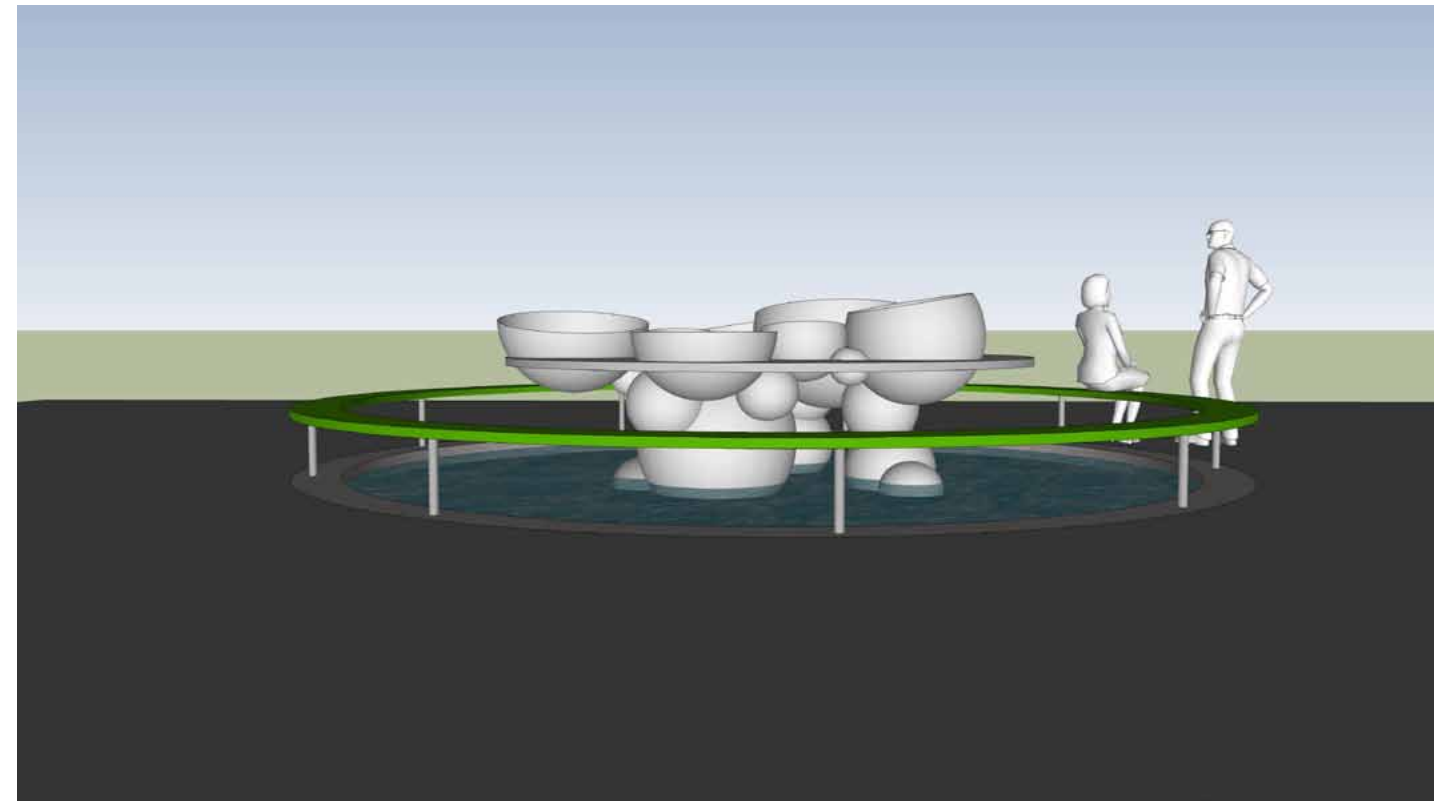
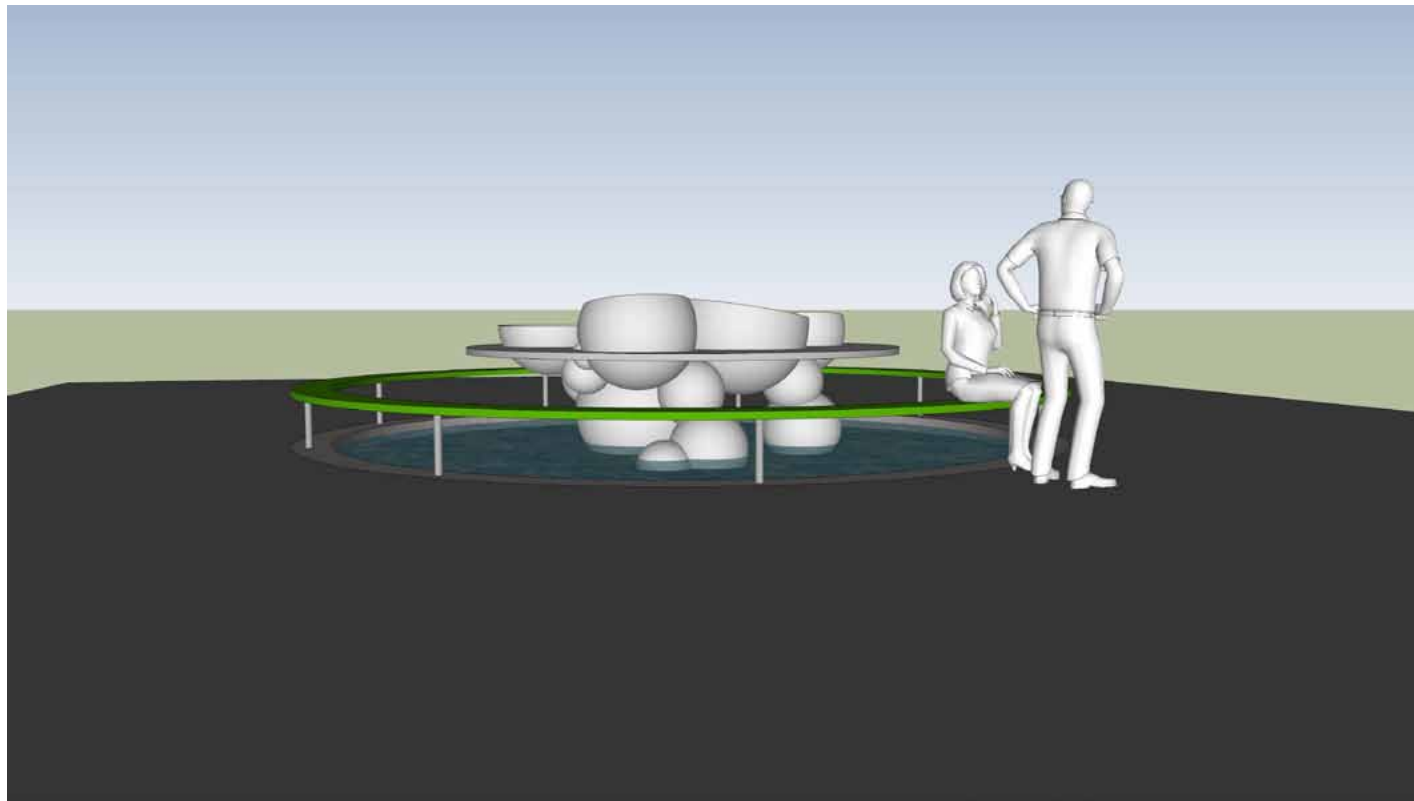
Dramatic LED lighting will emit from within the bowls illuminating the mists, fountains or laminar projections with a variety of color effects. Pool lights are also installed under the table to illuminate the bubbles and back light water cascading off the table's edge. A real time tuning of the fountain and lighting to respond to environmental conditions and social and civic functions will be included. Water displays are monitored and programmed in response to environmental conditions, social and civic needs. Winter ice formations are a possibility with this fountain sculpture. Seating surrounds the table providing inward and outward seating and allowing for engagement of feet and water. Because of the proximity of the geothermal water supply in the basement, I feel that a heated bench

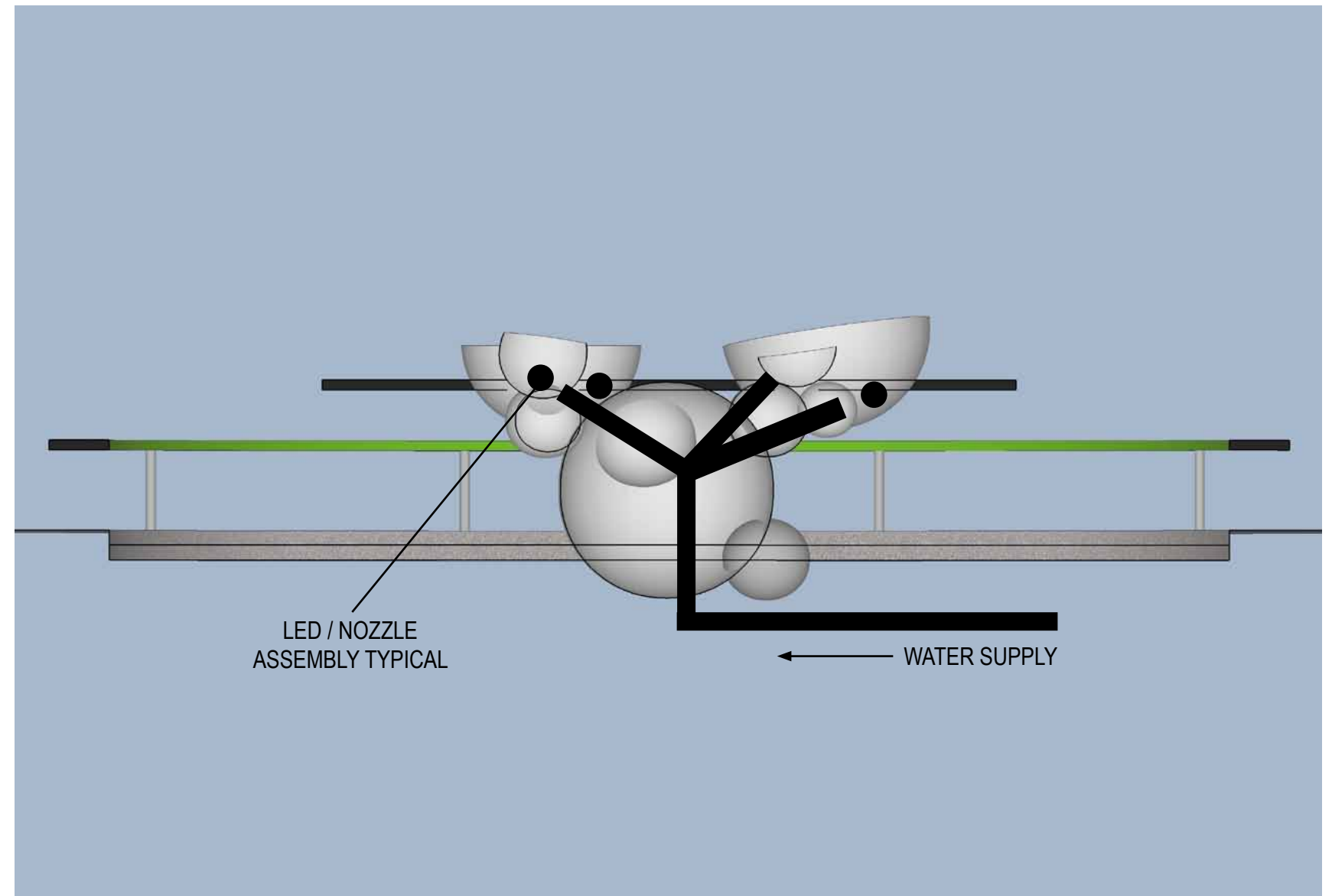
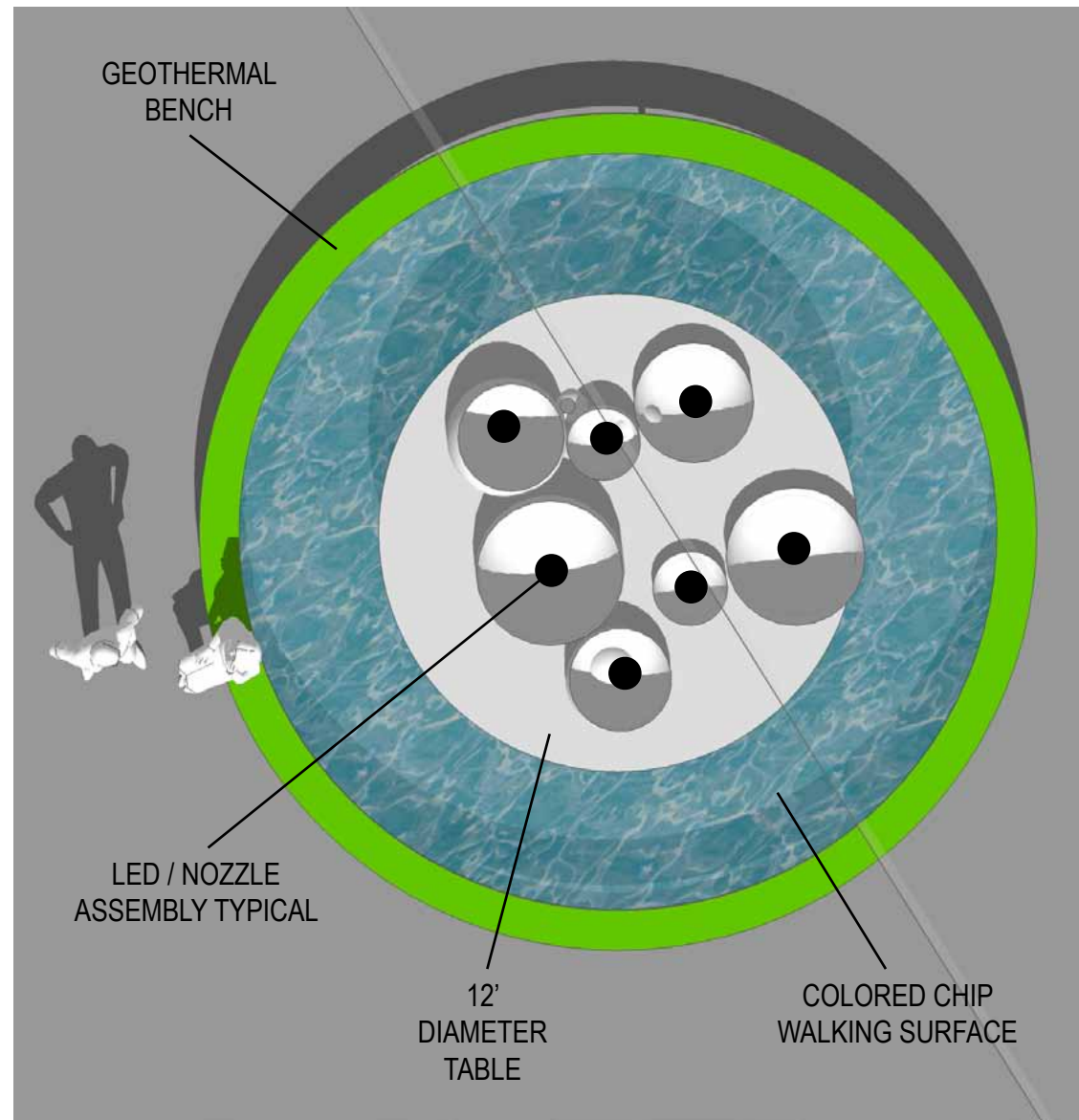
would be an asset. The fountain will be tuned to provide sounds capable of masking the traffic.

The surface of the bowls atop the table provides an opportunity for text or symbols/images to be either pierced at the edge or applied within the bowls. This will potentially be a collaborative process to assure a timeless concept and avoid the cliché, involving local writers submitting poetry and/or the collection of images from sources such as First Nations' pictographs, historic and scientific icons, or other regional references. The text and images will serve to contextualize the story of the water table's vessels within this place. A conversation and selection process to determine appropriate text and icons will start with the notion of civility; a sculptural civic discourse at city hall reinforcing the mission to represent and serve its citizens.

The bowls will be spun stainless steel spheres welded to the plate stainless steel table. All surfaces will be glass bead blasted for a satin finish. The table lip will assist structurally and provide a drip edge to assist water choreographed to flow out of the bowl and over the table edge. The lip will also provide a location for white LED lighting to backlight the falling water as well as illuminating the spheres below the table. The bench will provide a protective barrier between the plaza and the recessed fountain drainage. There is a possibility of controlling the water elevation within the drainage basin to create a pond effect.









Example of the affect that the mist mode would have rising up from the table.